



茂邦仓储设备
MAOBANG RACKINGSYSTEM

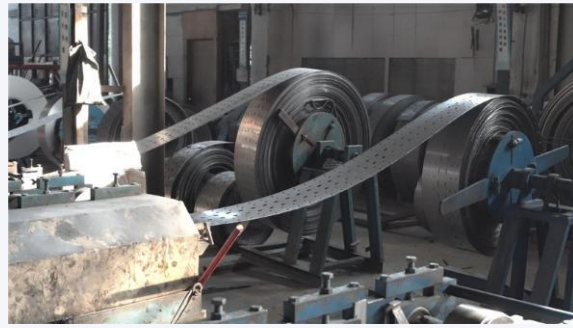
Welcome to Maobang





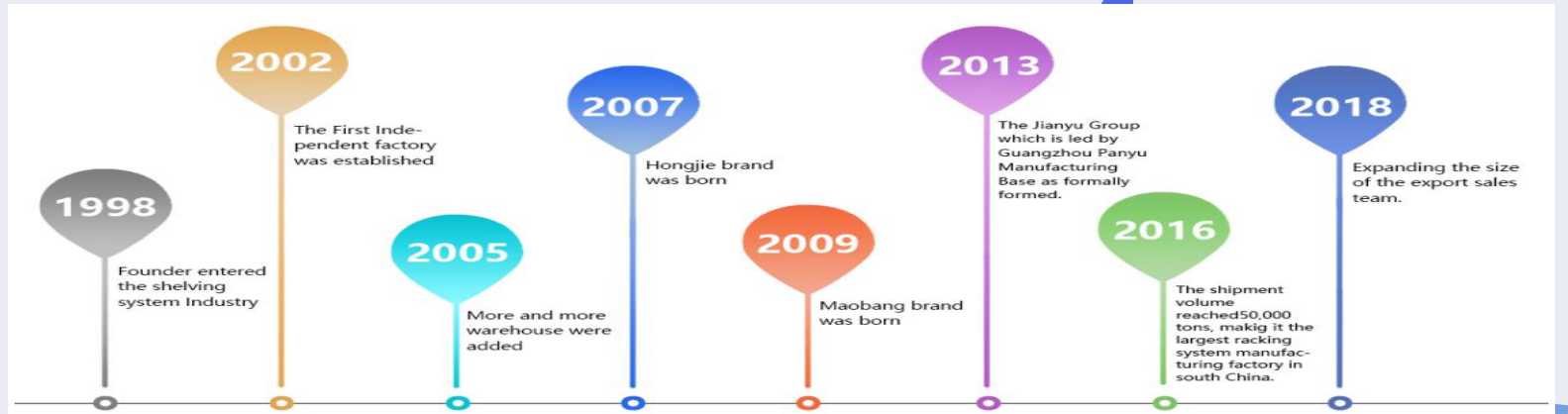
茂邦仓储设备
MAOBANG RACKINGSYSTEM

Maobang Team and Equipment



Maobang History

Guangzhou Maobang Storage Equipment Co., Ltd, is one of the earliest racking equipment suppliers in China Mainland. Our factory covers an area of 20,000 square meters with more than 300 staffs. The monthly output is up to 50,000 Tons.



01

Who We Are

02

What our development is

03

What We Do

04

What our core values are

We produce a wide range of storage products: wide span rack, pallet rack (drive in rack, selective rack, pushback rack), cantilever rack, mezzanines & Work platforms, steel pallet, storage cage, and relevant storage devices.

Integrity: Do what is right, say what is true.

Innovation: Be curious, use your brain, and do it often.

Concentration: Focus on what you expect, and there will be gains

Passion: Hold on to your dream and make it possible

Teamwork: Believe that you are doing great things with great people

Opportunity: Be prepared for quantitative change to promote qualitative change in things. It is time to make something new.



CONTENTS

- 1 Widespan rack
- 2 Selective rack
- 3 Drive in rack
- 4 Mezzanines racking system
- 5 Steel pallet
- 6 Cantilever rack
- 7 Other products



茂邦仓储设备
MAOBANG RACKINGSYSTEM

Widespan rack

Standard size for quick shipment



Load capacity of each layer	Size (Unit: mm)	Color
100KG	W1200*D400*H2000*4 layer	Blue/Grey
100KG	W1200*D500*H2000*4 layer	Blue/Grey
100KG	W1500*D400*H2000*4 layer	Blue/Grey
100KG	W1500*D500*H2000*4 layer	Blue/Grey
200KG	W1070*D400*H2000*4 layer	Blue/Grey/Orange
200KG	W1070*D500*H2000*4 layer	Blue/Grey/Orange
200KG	W1070*D600*H2000*4 layer	Blue/Grey/Orange
200KG	W1500*D400*H2000*4 layer	Blue/Grey/Orange
200KG	W1500*D500*H2000*4 layer	Blue/Grey/Orange
200KG	W1500*D600*H2000*4 layer	Blue/Grey/Orange
200KG	W2000*D400*H2000*4 layer	Blue/Grey/Orange
200KG	W2000*D500*H2000*4 layer	Blue/Grey/Orange
200KG	W2000*D600*H2000*4 layer	Blue/Grey/Orange
300KG	W2000*D600*H2000*4 layer	Blue/Grey/Orange
500KG	W2000*D600*H2000*4 layer	Blue/Grey/Orange

Hot sale model recommend:
L2000*W600*H2000MM

4 layers/shelves

200kg per shelf

The monthly sales volume is 5000 sets





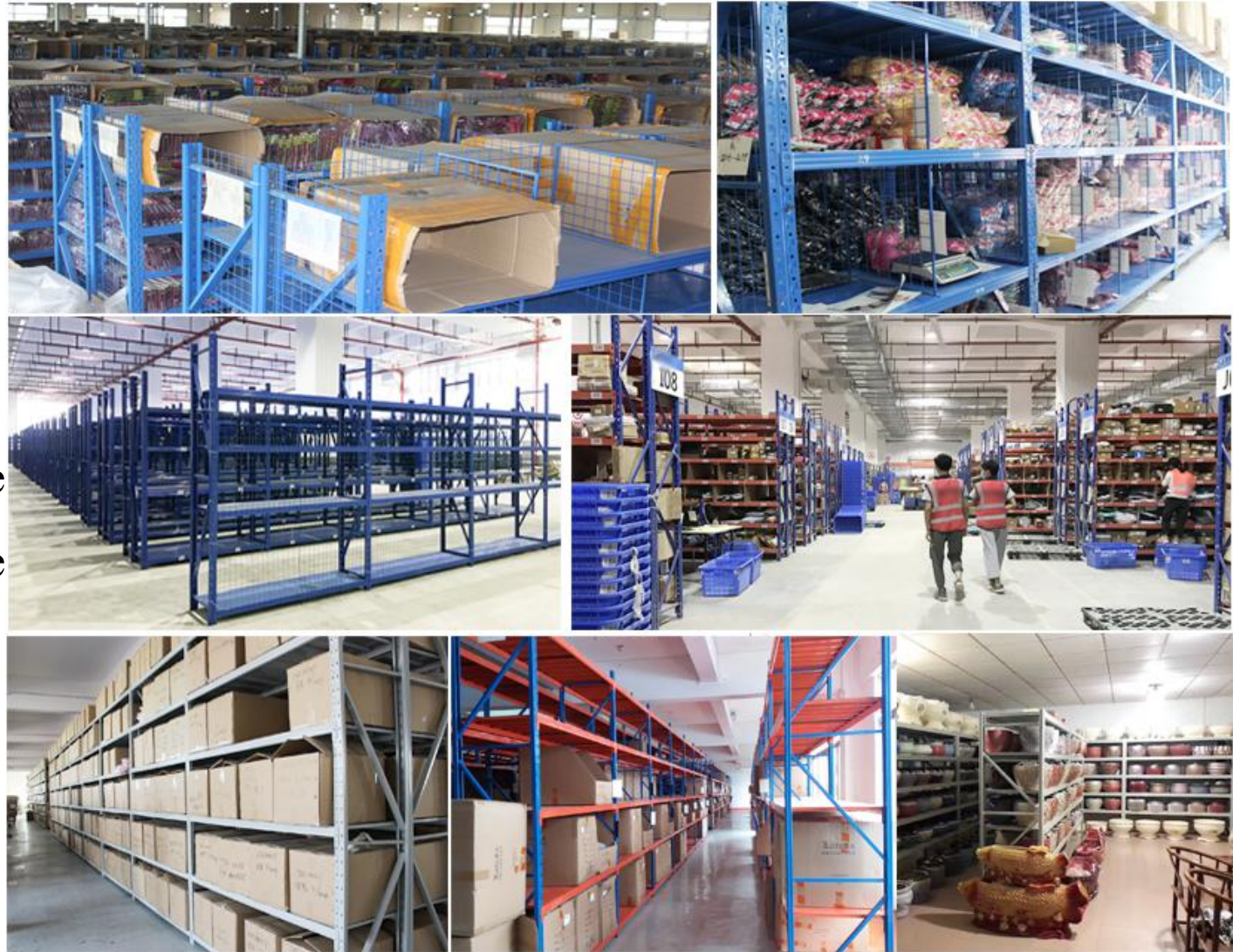
茂邦仓储设备
MAOBANG RACKINGSYSTEM

Cases of Widespan rack

1. Manual picking
2. Cargo in small size and light weight
3. Weight of each floor less than or equal to 500KG
4. Height can be adjusted freely with 5cm spacing
5. Suitable for lighter workplaces such as small parts and accessories
6. Welded frame, simple install

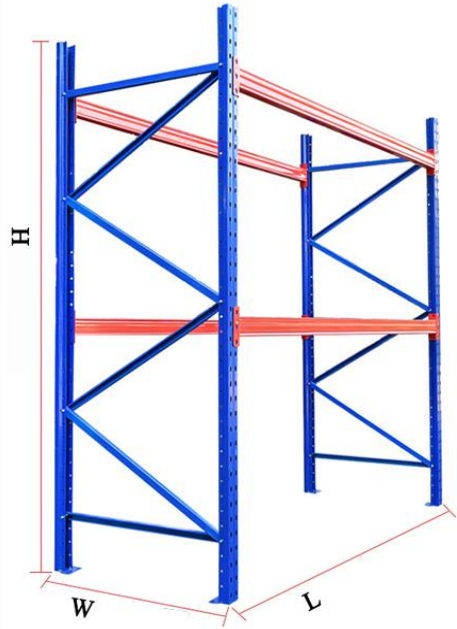
Main industries: logistics, e-commerce, retail

Multiple units of widespan racks can be connected to increase the overall stability of the racking shelves.





Selective rack



The selective pallet racking system can quickly and easily access the location of each product. It is the perfect choice for industries where inventory consumption is rapid and needs to be restocked in time. **The selective pallet rack system is generally suitable for large warehouses, such as supermarkets, retail stores, logistics, cold room, wholesale malls, etc.** It is usually used with a forklift truck.

How to know what dimension of pallet racking is suitable for your warehouse?

Pls try to offer us the following details:

1. What is the dimension of your pallet?
2. What is the weight of each pallet?
3. How many pieces pallet do you want to store in each layer?

What determines racking height?

1. The type of handling equipment you use.
2. The height of your warehouse.



Specifications of selective rack

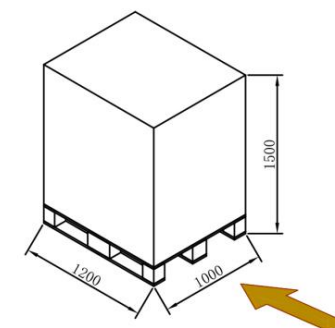
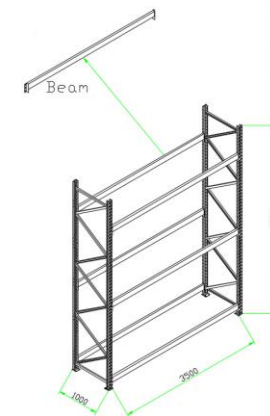
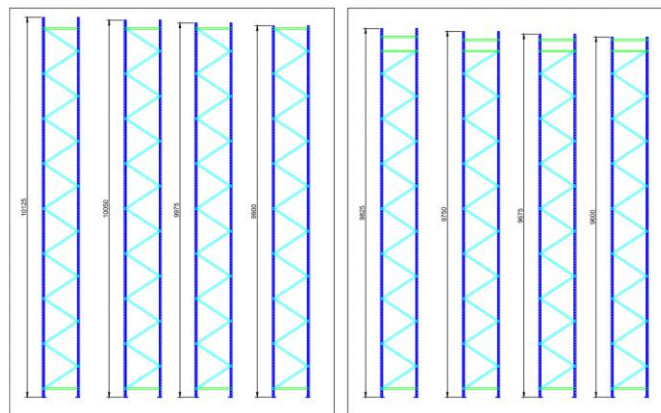
PALLET RACK UPRIGHT FRAMES

Specification	Height mm	Carrying capacity kg
55*50	4500	500
70*60	5000	900
90*60	6000/1000 0	1500
90*70	6000/1000 0	3000
100*70	6000/1000 0	4000
90*120		4000
90*140		6000
100*140		6500

PALLET RACK HORIZONTAL BEAMS

Length MM	Specification	Carrying capacity kg	Pallet
1900	80*45	1668	2 x <u>1200*800</u>
2300	100*45	1937	2 x <u>1200*1000</u>
2500	120*45	2517	2x <u>1100*1100</u>
2700	140*45	3117	2 x <u>1200*1200</u>
2700	160*45	4306	3x <u>1200*800</u>

More lengths are welcome to custom



1200KG



茂邦仓储设备
MAOBANG RACKINGSYSTEM

Multiple choices of selective rack



Rack only



Steel panel



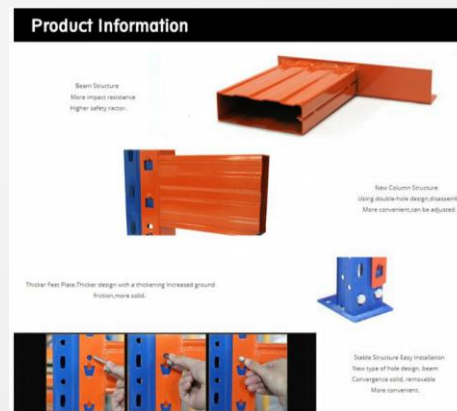
Wire decking



Wooden panel



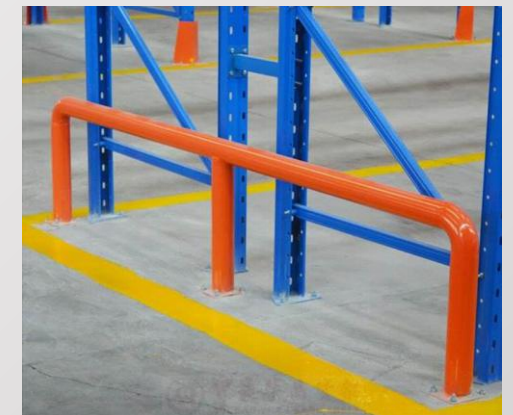
Support bar



Safety pin



Column protector



Crash barrier



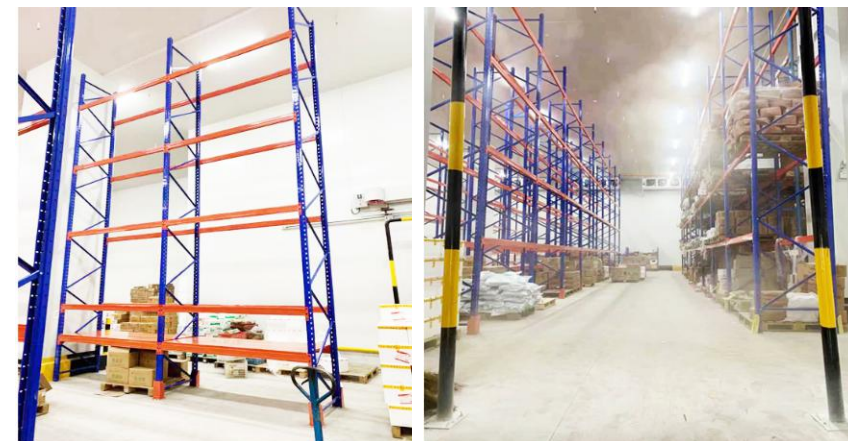
Applications of selective rack



**Selective rack in normal temperature environment
Logistics company and supermarket warehouse**



Selective racks in food cold room storage (-30°)





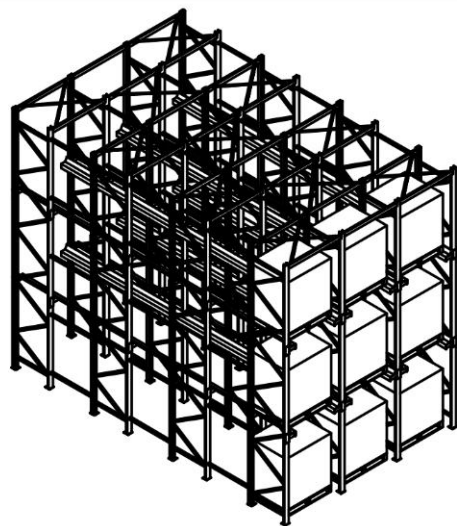
茂邦仓储设备
MAOBANG RACKINGSYSTEM

Cases of selective rack





Drive in rack



Drive in and drive thru racks can be used for forklifts (or unmanned trucks with forks) to enter the channel to access the goods

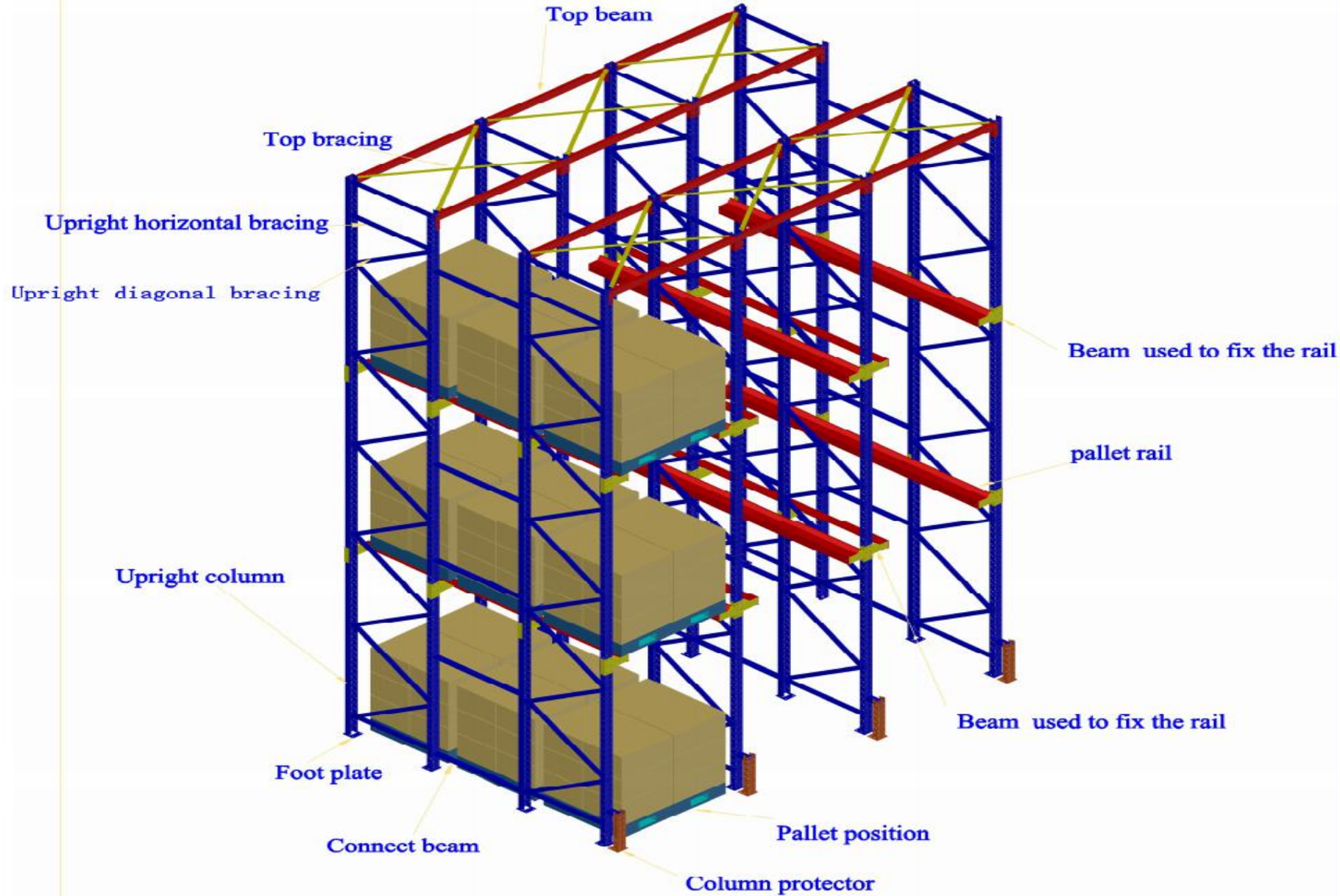
The storage capacity of the drive in racks is almost double that of the selective racks in the same space, because the aisle between the rows of racks is eliminated, the racks are merged together, so that the goods of the same layer and the same row are connected to each other. Maximize storage capacity utilization.

Features:

1. The space utilization is the highest.
2. The principle followed is that the goods are accessed from the same side of the rack, FIRST IN LAST OUT, LAST IN FIRST OUT.
3. **Widely used for the storage of large-volume, small-variety goods, such goods are packaged in a unified, single product, such as: food, tobacco, cold storage and other warehouses.**
4. The stability of the drive in racking system is the weaker among all types of racks. For this reason, the racks should not be too high, generally within 10m.



Parts of drive in rack



Cases of drive in rack





Mezzanines floor system



Mezzanines and work platforms can DOUBLE , TRIPLE , even QUADRUPLE your existing warehouse space, for up to 80% less the cost of an addition.

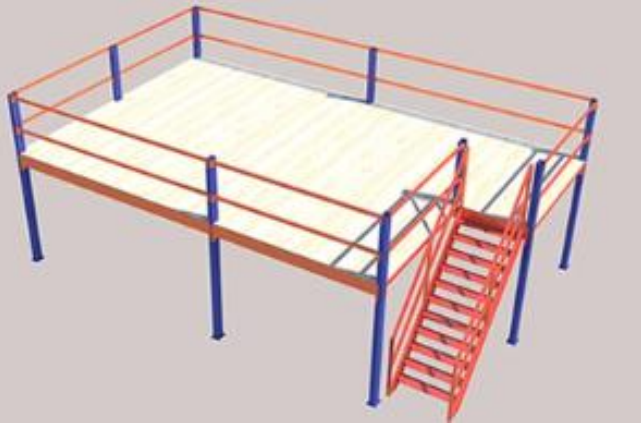
The mezzanines floor system is to **build an intermediate steel mezzanine floor on the existing work site** or racking shelf to increase the storage space. It can be made into a two or three level mezzanine floor system, which is used to deposit and withdraw some light foam and small and medium-sized goods. It is suitable for multi-variety large-scale or multi-variety small-batch goods, and manual access to goods. The goods are usually delivered to the second and third floors by forklifts, hydraulic lifting platforms or freight elevators, and then delivered to a certain location by light trolleys or hydraulic pallet trucks.

Application:

It can be **used as office or warehouse** to store goods.



Types of mezzanines floor system



Mezzanine floor

Structure: mezzanine with stair only

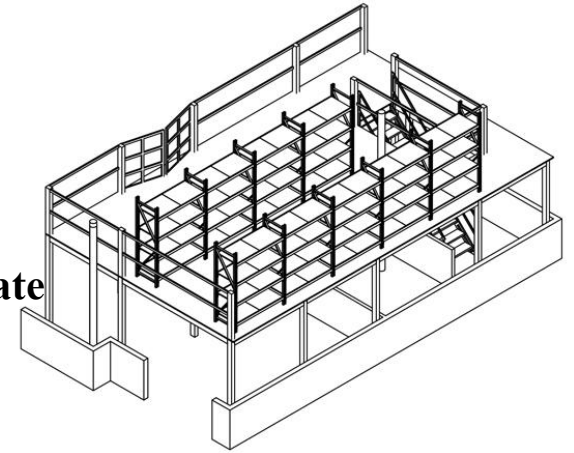
Application:

The height of the warehouse is required to be greater than 4.3 meters

Mezzanine floor

Structure: mezzanine with stair and sliding door

The racks and mezzanine floor systems are two completely separate parts



Multi tiers mezzanine floor

Structure: 3 levels mezzanine floor with stair.

The racks and mezzanine floor systems are two completely separate parts

Application:

The height of the warehouse is required to be greater than 6.5 meters

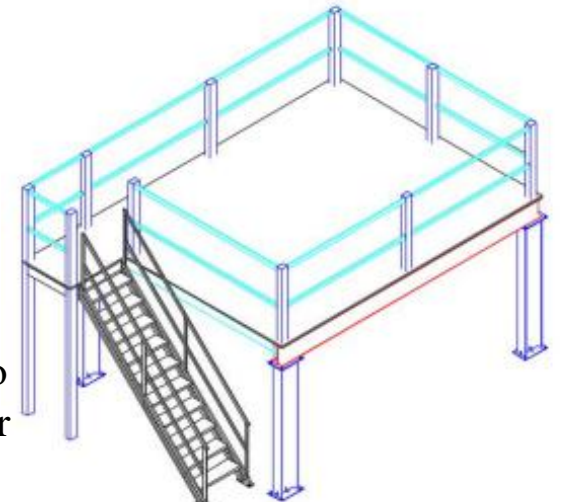
H steel structure mezzanine floor

Structure: Upright in H shape post.

Application:

1. The distance between the two columns is required to be bigger than 4.2 meters.

2. The load capacity of mezzanine floor is bigger than 1000kg





茂邦仓储设备
MAOBANG RACKINGSYSTEM

Cases of mezzanines floor system

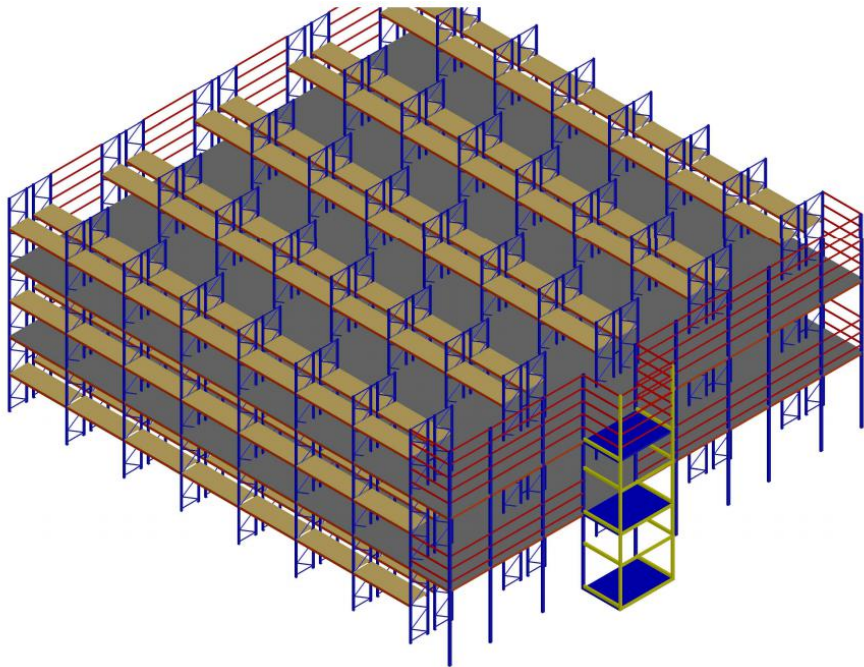




Racking supported mezzanines floor system



Racking supported mezzanines can be in the form of racking shelves on the ground floor and platform forms on the upper layer, or a structure in which both upper and lower floors are racking shelves. The racking shelves on the bottom layer is not only a place for storing materials, but also a support for the load-bearing of the superstructure. It can be designed as multiple tiers, usually two to three tiers. Generally equipped with stairs, handrails, elevators, lighting systems, etc.



Application:

1. The height of warehouse is higher than 6 meters;
2. The material of floor is very strong;
3. The weight of a single piece of goods is less than 15KG, and the volume is preferably less than 80*80CM;
4. Manual sorting;
5. Many SKUs

Racking supported mezzanines is also called integrated racking, which is the racking system with the highest space utilization rate and the largest inventory rate.

Types of racking supported mezzanines floor system

Structure:

Racking shelves on the ground floor, mezzanine platform on the upper layer.



Structure:

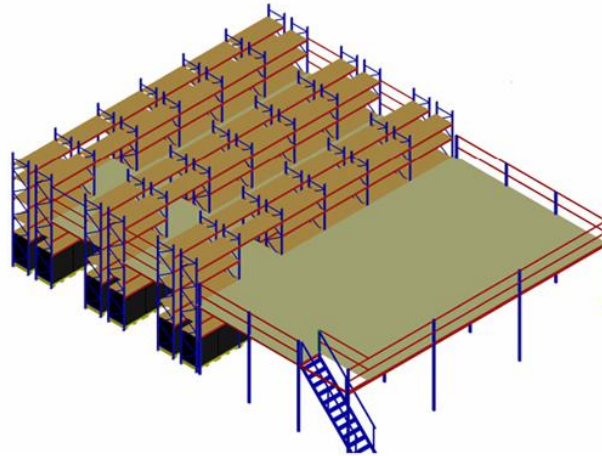
Both upper and ground floors are racking shelves



Structure:

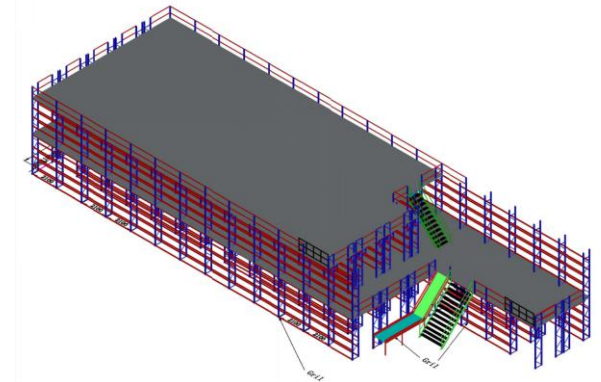
Both upper and ground floors are racking shelves.

What's more, racking mezzanine floor and mezzanine platform two in one



Structure:

3 tiers racking mezzanine with mezzanine platform on top





茂邦仓储设备
MAOBANG RACKINGSYSTEM

Accessories of mezzanines floor system

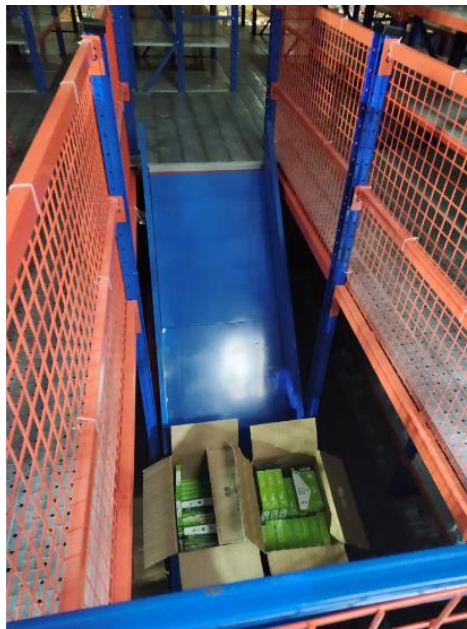
Stair



Cargo lift



Slide for goods



Wooden floor



Steel gusset plate

Protecting wire deckign



Slide door



Handrail



Steel pallet

Steel pallet is an ideal replacement product for traditional wooden pallets and plastic pallets. The main material is steel or galvanized steel.

Advantage:

1. The carrying capacity is the strongest among the pallets.
2. 100% environmental protection, can be recycled and reused, and resources are not wasted.
3. The surface is treated with anti-skid treatment, and the periphery is treated with edging. The chassis is firm, the overall weight is light and the steel is strong. Have stable packaging performance;
4. Waterproof, moisture-proof and rust-proof; compared with wooden pallets, it has environmental advantages (such as the capacity of wooden pallets to breed pests).
5. Compared with plastic pallets, it has strength, wear resistance, temperature resistance and price advantages.
6. Especially when it is used for export, it does not need fumigation, high temperature disinfection or anti-corrosion treatment, in line with international environmental protection regulations.





茂邦仓储设备
MAOBANG RACKINGSYSTEM

Types of steel pallet



There are different styles for different purposes, please contact us for more designs



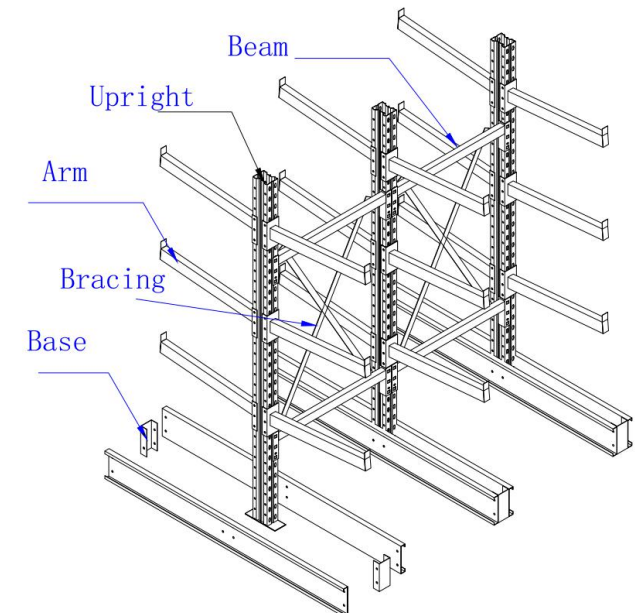
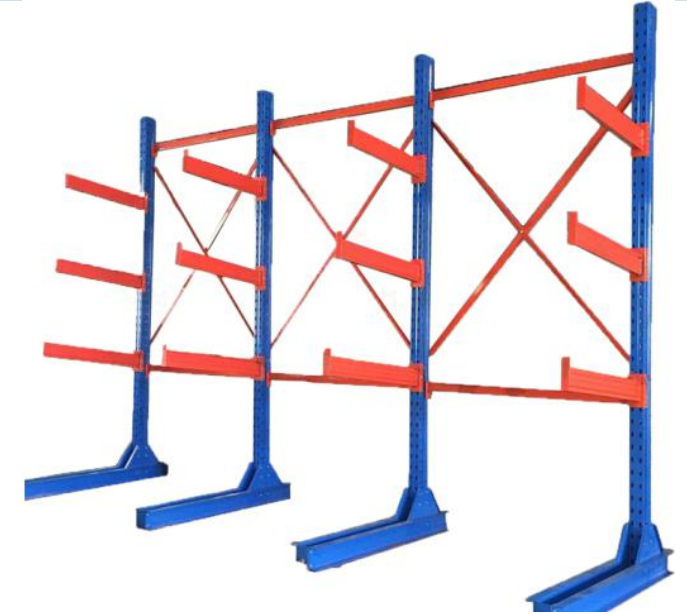
Cantilever rack

Cantilever racks are suitable for storing long materials, ring materials, plates, pipes and irregular goods. The cantilever can be single-sided or double-sided. The cantilever rack has the characteristics of stable structure, good load capacity, and high space utilization.

Cargo access is carried out by forklift, crane or manual.

The shelf height is usually within 2.5 meters (if the goods are retrieved by a forklift, it can be as high as 6 meters), the cantilever length is within 1.5 meters, and the load per arm is usually within 500KG

Such kind of racks are mostly used in the machinery manufacturing industry and building materials supermarkets, etc.





茂邦仓储设备
MAOBANG RACKINGSYSTEM

Cases of cantilever rack





茂邦仓储设备
MAOBANG RACKINGSYSTEM

Other products





茂邦仓储设备
MAOBANG RACKINGSYSTEM

Maobang Partners



买菜卖菜上美菜

HONOR





茂邦仓储设备
MAOBANG RACKINGSYSTEM

Maobang Strength Certificates: SGS, ISO9001

Verified

Gold Plus Supplier Assessment Certificate

Certification No.: 20932127_P+T

Guangzhou Maobang Storage Equipment Co., Ltd.

广州茂邦仓储设备有限公司

<http://jianyushelf.en.alibaba.com>

Onsite assessment was conducted by SGS

Valid: 12 Sep., 2020 to 11 Sep., 2021

Issued by: Assessed by:

Signature:

Title: Director of SGS eCommerce, Government&Institution Services,SGS CHK

宝 BAOH ZZtest 广东中准
Guangdong Zh

校 CALIB

证书编号
Certificat No.

委托方 广州
Client

委托方地址 广州
Add of Client

器具用途 器具用途
Appliance Use

制造商名称 制造商
Manufacturer

型号/规格 型号/规格
Model/Type

编号 编号
No.

接收日期 2011
Recd Date

校准日期 2011
CAL Date

批准人 志
Approved Signature

检验员 志
Checked by

校准员 任
Calibrated by

订货单位 CONSIGNEE: 茂
发货日期 DATE OF ISSU:
执行标准 STANDARD: Q /
质保书号 W RLSHEETS O /
交货状态 DELIVERY STATE

销售号 SELL STEEL No.	014 0141
规格	
H 2419007511	E1940
H 2419007512	E1940
H 2419007513	E1940
H 2419007514	E1940
H 2419007515	E1940
H 2419007516	E1940
H 2419007517	E1940
H 2419007518	E1940

注: 1. 打印标准号: JIS S 4113
2. 2011年11月15日
3. 2011年11月15日
4. 2011年11月15日
5. 2011年11月15日
6. 2011年11月15日
7. 2011年11月15日
8. 2011年11月15日
9. 2011年11月15日
10. 2011年11月15日

尊敬的客户: 请留意验证
70 K C I S T O W E R S - T E S T D E P T

NQA

**QUALITY MANAGEMENT SYSTEM
CERTIFICATE**

This is to Certify that the QUALITY MANAGEMENT SYSTEM of
Guangzhou maobang storage equipment co. LTD
Registered Address No. 15, Fuping Road, Shatou Street, Fanyu District, Guangzhou
Audit Address No. 15, Fuping Road, Shatou Street, Fanyu District, Guangzhou

Has been assessed by NQA Certification
and found to comply with
GB/T19001-2016 Idt ISO9001:2015
for the scope of
Manufacture of warehouse metal combination shelves

Certificate Number: NQA190208
United States Credit Code: 01400112070400000
Certificate Issue Date: 12 Jun. 2019
Certificate Valid Until: 12 Jun. 2021

NOA Certification Service

(19)中华人民共和国

证书号 第 4204199 号

121申请号 20172009429
122申请日期 2017.04.06
123申请人 广州茂邦仓储
地址 510000 广东省广州市
福平路15号

124申请人 陈加坤 陈小平
125申请人 陈加坤 陈小平
代理人 肖平安
131/132/133/134/135/136/137/138/139/140/141/142/143/144/145/146/147/148/149/150/151/152/153/154/155/156/157/158/159/160/161/162/163/164/165/166/167/168/169/170/171/172/173/174/175/176/177/178/179/180/181/182/183/184/185/186/187/188/189/190/191/192/193/194/195/196/197/198/199/200/201/202/203/204/205/206/207/208/209/210/211/212/213/214/215/216/217/218/219/220/221/222/223/224/225/226/227/228/229/230/231/232/233/234/235/236/237/238/239/240/241/242/243/244/245/246/247/248/249/250/251/252/253/254/255/256/257/258/259/260/261/262/263/264/265/266/267/268/269/270/271/272/273/274/275/276/277/278/279/280/281/282/283/284/285/286/287/288/289/290/291/292/293/294/295/296/297/298/299/300/301/302/303/304/305/306/307/308/309/310/311/312/313/314/315/316/317/318/319/320/321/322/323/324/325/326/327/328/329/330/331/332/333/334/335/336/337/338/339/340/341/342/343/344/345/346/347/348/349/350/351/352/353/354/355/356/357/358/359/360/361/362/363/364/365/366/367/368/369/370/371/372/373/374/375/376/377/378/379/380/381/382/383/384/385/386/387/388/389/390/391/392/393/394/395/396/397/398/399/400/401/402/403/404/405/406/407/408/409/410/411/412/413/414/415/416/417/418/419/420/421/422/423/424/425/426/427/428/429/430/431/432/433/434/435/436/437/438/439/440/441/442/443/444/445/446/447/448/449/450/451/452/453/454/455/456/457/458/459/460/461/462/463/464/465/466/467/468/469/470/471/472/473/474/475/476/477/478/479/480/481/482/483/484/485/486/487/488/489/490/491/492/493/494/495/496/497/498/499/500/501/502/503/504/505/506/507/508/509/510/511/512/513/514/515/516/517/518/519/520/521/522/523/524/525/526/527/528/529/530/531/532/533/534/535/536/537/538/539/540/541/542/543/544/545/546/547/548/549/550/551/552/553/554/555/556/557/558/559/560/561/562/563/564/565/566/567/568/569/570/571/572/573/574/575/576/577/578/579/580/581/582/583/584/585/586/587/588/589/590/591/592/593/594/595/596/597/598/599/600/601/602/603/604/605/606/607/608/609/610/611/612/613/614/615/616/617/618/619/620/621/622/623/624/625/626/627/628/629/630/631/632/633/634/635/636/637/638/639/640/641/642/643/644/645/646/647/648/649/650/651/652/653/654/655/656/657/658/659/660/661/662/663/664/665/666/667/668/669/670/671/672/673/674/675/676/677/678/679/680/681/682/683/684/685/686/687/688/689/690/691/692/693/694/695/696/697/698/699/700/701/702/703/704/705/706/707/708/709/710/711/712/713/714/715/716/717/718/719/720/721/722/723/724/725/726/727/728/729/730/731/732/733/734/735/736/737/738/739/740/741/742/743/744/745/746/747/748/749/750/751/752/753/754/755/756/757/758/759/760/761/762/763/764/765/766/767/768/769/770/771/772/773/774/775/776/777/778/779/780/781/782/783/784/785/786/787/788/789/790/791/792/793/794/795/796/797/798/799/800/801/802/803/804/805/806/807/808/809/810/811/812/813/814/815/816/817/818/819/820/821/822/823/824/825/826/827/828/829/830/831/832/833/834/835/836/837/838/839/840/841/842/843/844/845/846/847/848/849/850/851/852/853/854/855/856/857/858/859/860/861/862/863/864/865/866/867/868/869/870/871/872/873/874/875/876/877/878/879/880/881/882/883/884/885/886/887/888/889/890/891/892/893/894/895/896/897/898/899/900/901/902/903/904/905/906/907/908/909/910/911/912/913/914/915/916/917/918/919/920/921/922/923/924/925/926/927/928/929/930/931/932/933/934/935/936/937/938/939/940/941/942/943/944/945/946/947/948/949/950/951/952/953/954/955/956/957/958/959/960/961/962/963/964/965/966/967/968/969/970/971/972/973/974/975/976/977/978/979/980/981/982/983/984/985/986/987/988/989/990/991/992/993/994/995/996/997/998/999/1000/1001/1002/1003/1004/1005/1006/1007/1008/1009/1010/1011/1012/1013/1014/1015/1016/1017/1018/1019/1020/1021/1022/1023/1024/1025/1026/1027/1028/1029/1030/1031/1032/1033/1034/1035/1036/1037/1038/1039/1040/1041/1042/1043/1044/1045/1046/1047/1048/1049/1050/1051/1052/1053/1054/1055/1056/1057/1058/1059/1060/1061/1062/1063/1064/1065/1066/1067/1068/1069/1070/1071/1072/1073/1074/1075/1076/1077/1078/1079/1080/1081/1082/1083/1084/1085/1086/1087/1088/1089/1090/1091/1092/1093/1094/1095/1096/1097/1098/1099/1100/1101/1102/1103/1104/1105/1106/1107/1108/1109/1110/1111/1112/1113/1114/1115/1116/1117/1118/1119/1120/1121/1122/1123/1124/1125/1126/1127/1128/1129/1130/1131/1132/1133/1134/1135/1136/1137/1138/1139/1140/1141/1142/1143/1144/1145/1146/1147/1148/1149/1150/1151/1152/1153/1154/1155/1156/1157/1158/1159/1160/1161/1162/1163/1164/1165/1166/1167/1168/1169/1170/1171/1172/1173/1174/1175/1176/1177/1178/1179/1180/1181/1182/1183/1184/1185/1186/1187/1188/1189/1190/1191/1192/1193/1194/1195/1196/1197/1198/1199/1200/1201/1202/1203/1204/1205/1206/1207/1208/1209/1210/1211/1212/1213/1214/1215/1216/1217/1218/1219/1220/1221/1222/1223/1224/1225/1226/1227/1228/1229/1230/1231/1232/1233/1234/1235/1236/1237/1238/1239/1240/1241/1242/1243/1244/1245/1246/1247/1248/1249/1250/1251/1252/1253/1254/1255/1256/1257/1258/1259/1260/1261/1262/1263/1264/1265/1266/1267/1268/1269/1270/1271/1272/1273/1274/1275/1276/1277/1278/1279/1280/1281/1282/1283/1284/1285/1286/1287/1288/1289/1290/1291/1292/1293/1294/1295/1296/1297/1298/1299/1300/1301/1302/1303/1304/1305/1306/1307/1308/1309/1310/1311/1312/1313/1314/1315/1316/1317/1318/1319/1320/1321/1322/1323/1324/1325/1326/1327/1328/1329/1330/1331/1332/1333/1334/1335/1336/1337/1338/1339/1340/1341/1342/1343/1344/1345/1346/1347/1348/1349/1350/1351/1352/1353/1354/1355/1356/1357/1358/1359/1360/1361/1362/1363/1364/1365/1366/1367/1368/1369/1370/1371/1372/1373/1374/1375/1376/1377/1378/1379/1380/1381/1382/1383/1384/1385/1386/1387/1388/1389/1390/1391/1392/1393/1394/1395/1396/1397/1398/1399/1400/1401/1402/1403/1404/1405/1406/1407/1408/1409/1410/1411/1412/1413/1414/1415/1416/1417/1418/1419/1420/1421/1422/1423/1424/1425/1426/1427/1428/1429/1430/1431/1432/1433/1434/1435/1436/1437/1438/1439/1440/1441/1442/1443/1444/1445/1446/1447/1448/1449/1450/1451/1452/1453/1454/1455/1456/1457/1458/1459/1460/1461/1462/1463/1464/1465/1466/1467/1468/1469/1470/1471/1472/1473/1474/1475/1476/1477/1478/1479/1480/1481/1482/1483/1484/1485/1486/1487/1488/1489/1490/1491/1492/1493/1494/1495/1496/1497/1498/1499/1500/1501/1502/1503/1504/1505/1506/1507/1508/1509/1510/1511/1512/1513/1514/1515/1516/1517/1518/1519/1520/1521/1522/1523/1524/1525/1526/1527/1528/1529/1530/1531/1532/1533/1534/1535/1536/1537/1538/1539/1540/1541/1542/1543/1544/1545/1546/1547/1548/1549/1550/1551/1552/1553/1554/1555/1556/1557/1558/1559/1560/1561/1562/1563/1564/1565/1566/1567/1568/1569/1570/1571/1572/1573/1574/1575/1576/1577/1578/1579/1580/1581/1582/1583/1584/1585/1586/1587/1588/1589/1590/1591/1592/1593/1594/1595/1596/1597/1598/1599/1600/1601/1602/1603/1604/1605/1606/1607/1608/1609/1610/1611/1612/1613/1614/1615/1616/1617/1618/1619/1620/1621/1622/1623/1624/1625/1626/1627/1628/1629/1630/1631/1632/1633/1634/1635/1636/1637/1638/1639/1640/1641/1642/1643/1644/1645/1646/1647/1648/1649/1650/1651/1652/1653/1654/1655/1656/1657/1658/1659/1660/1661/1662/1663/1664/1665/1666/1667/1668/1669/1670/1671/1672/1673/1674/1675/1676/1677/1678/1679/1680/1681/1682/1683/1684/1685/1686/1687/1688/1689/1690/1691/1692/1693/1694/1695/1696/1697/1698/1699/1700/1701/1702/1703/1704/1705/1706/1707/1708/1709/1710/1711/1712/1713/1714/1715/1716/1717/1718/1719/1720/1721/1722/1723/1724/1725/1726/1727/1728/1729/1730/1731/1732/1733/1734/1735/1736/1737/1738/1739/1740/1741/1742/1743/1744/1745/1746/1747/1748/1749/1750/1751/1752/1753/1754/1755/1756/1757/1758/1759/1760/1761/1762/1763/1764/1765/1766/1767/1768/1769/1770/1771/1772/1773/1774/1775/1776/1777/1778/1779/1780/1781/1782/1783/1784/1785/1786/1787/1788/1789/1790/1791/1792/1793/1794/1795/1796/1797/1798/1799/1800/1801/1802/1803/1804/1805/1806/1807/1808/1809/1810/1811/1812/1813/1814/1815/1816/1817/1818/1819/1820/1821/1822/1823/1824/1825/1826/1827/1828/1829/1830/1831/1832/1833/1834/1835/1836/1837/1838/1839/1840/1841/1842/1843/1844/1845/1846/1847/1848/1849/1850/1851/1852/1853/1854/1855/1856/1857/1858/1859/1860/1861/1862/1863/1864/1865/1866/1867/1868/1869/1870/1871/1872/1873/1874/1875/1876/1877/1878/1879/1880/1881/1882/1883/1884/1885/1886/1887/1888/1889/1890/1891/1892/1893/1894/1895/1896/1897/1898/1899/1900/1901/1902/1903/1904/1905/1906/1907/1908/1909/1910/1911/1912/1913/1914/1915/1916/1917/1918/1919/1920/1921/1922/1923/1924/1925/1926/1927/1928/1929/1930/1931/1932/1933/1934/1935/1936/1937/1938/1939/1940/1941/1942/1943/1944/1945/1946/1947/1948/1949/1950/1951/1952/1953/1954/1955/1956/1957/1958/1959/1960/1961/1962/1963/1964/1965/1966/1967/1968/1969/1970/1971/1972/1973/1974/1975/1976/1977/1978/1979/1980/1981/1982/1983/1984/1985/1986/1987/1988/1989/1990/1991/1992/1993/1994/1995/1996/1997/1998/1999/2000/2001/2002/2003/2004/2005/2006/2007/2008/2009/2010/2011/2012/2013/2014/2015/2016/2017/2018/2019/2020/2021/2022/2023/2024/2025/2026/2027/2028/2029/2030/2031/2032/2033/2034/2035/2036/2037/2038/2039/2040/2041/2042/2043/2044/2045/2046/2047/2048/2049/2050/2051/2052/2053/2054/2055/2056/2057/2058/2059/2060/2061/2062/2063/2064/2065/2066/2067/2068/2069/2070/2071/2072/2073/2074/2075/2076/2077/2078/2079/2080/2081/2082/2083/2084/2085/2086/2087/2088/2089/2090/2091/2092/2093/2094/2095/2096/2097/2098/2099/2100/2101/2102/2103/2104/2105/2106/2107/2108/2109/2110/2111/2112/2113/2114/2115/2116/2117/2118/2119/2120/2121/2122/2123/2124/2125/2126/2127/2128/2129/2130/2131/2132/2133/2134/2135/2136/2137/2138/2139/2140/2141/2142/2143/2144/2145/2146/2147/2148/2149/2150/2151/2152/2153/2154/2155/2156/2157/2158/2159/2160/2161/2162/2163/2164/2165/2166/2167/2168/2169/2170/2171/2172/2173/2174/2175/2176/2177/2178/2179/2180/2181/2182/2183/2184/2185/2186/2187/2188/2189/2190/2191/2192/2193/2194/2195/2196/2197/2198/2199/2200/2201/2202/2203/2204/2205/2206/2207/2208/2209/2210/2211/2212/2213/2214/2215/2216/2217/2218/2219/2220/2221/2222/2223/2224/2225/2226/2227/2228/2229/2230/2231/2232/2233/2234/2235/2236/2237/2238/2239/2240/2241/2242/2243/2244/2245/2246/2247/2248/2249/2250/2251/2252/2253/2254/2255/2256/2257/2258/2259/2260/2261/2262/2263/2264/2265/2266/2267/2268/2269/2270/2271/2272/2273/2274/2275/2276/2277/2278/2279/2280/2281/2282/2283/2284/2285/2286/2287/2288/2289/2290/2291/2292/2293/2294/2295/2296/2297/2298/2299/2300/2301/2302/2303/2304/2305/2306/2307/2308/2309/2310/2311/2312/2313/2314/2315/2316/2317/2318/2319/2320/2321/2322/2323/2324/2325/2326/2327/2328/2329/2330/2331/2332/2333/2334/2335/2336/2337/2338/2339/2340/2341/2342/2343/2344/2345/2346/2347/2348/2349/2350/2351/2352/2353/2354/2355/2356/2357/2358/2359/2360/2361/2362/2363/2364/2365/2366/2367/2368/2369/2370/2371/2372/2373/2374/2375/2376/2377/2378/2379/2380/2381/2382/2383/2384/2385/2386/2387/2388/2389/2390/2391/2392/2393/2394/2395/2396/2397/2398/2399/2400/2401/2402/2403/2404/2405/2406/2407/2408/2409/2410/2411/2412/2413/2414/2415/2416/2417/2418/2419/2



Whether you want standard pallet racking, or a more complex customized system, we will have a reliable, cost conscious, high-quality solution for your choice.

Please find us at **+86 13922701145** (Whatsapp and wechat) or send us an Email info@mbstoragerack.com

<https://www.mbstoragerack.com/>
<https://jianyushelf.en.alibaba.com>

**A company that client can believe in;
A company that you can rely on.**

